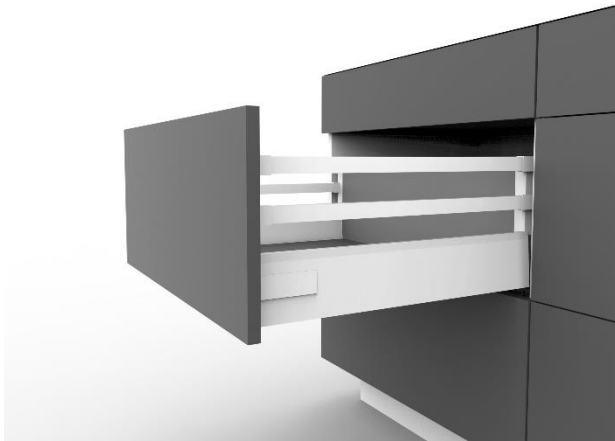


ELEGANT HARDWARE PRODUCT CATALOGUE

October 2019



**Kitchen, Joinery, Shop Fittings
&
Furniture Hardware Supplies**

DRAWER SYSTEMS

Elegant Hardware Pty Ltd
ACN 602 152 367
2/2 John Street, Dandenong Vic 3175 Australia
Phone: 03 9794 8394 / 0403 471 113
Fax 03 9794 8608
Email: info@eleganthardware.com.au
www.eleganthardware.com.au

About us:

Elegant Hardware was established in 2005 as an importer and distributor of Cabinet Hardware products for Kitchen, Joinery, Shop fittings and Furniture Hardware clients.

We have many satisfied clients. Our clients appreciate the quality of our products and the level of customer service we offer.

We have established long term relationships with our suppliers who are manufacturers. This enables us to offer quality products on time at competitive prices.

We can source custom products to suit the requirements of your project.

We appreciate that you may already be using some of these or similar products, but we would request you to go through this catalogue and give us an opportunity to service your requirement of cabinet hardware.

We strive to supply products of quality fit for purpose at a competitive price and a service we are proud to say our customers appreciate.

Disclaimer

The information provided in this catalogue is provided for general information only. The information is not warranted to be accurate, up to date, complete or definitive. User must use its own discretion to check and validate any specification prior to ordering.

Subject to applicable laws, Elegant Hardware will not accept any liability for any loss or damage, including consequential loss, which results from the access or use of this catalogue and its contents, including reliance upon the information.

Elegant Hardware reserves the right to change any of the goods, services and policies referred to in this catalogue at any time without notice.

Since the use of this information and the conditions in which these products are used is beyond the control of Elegant Hardware, a user must determine whether the products are fit for the purpose for which they are to be used, and is responsible for safe use of the products.

To the extent permitted by law, any liability which may be incurred by Elegant Hardware as a result of the use of or failure of a product is limited at Elegant Hardware's discretion to repair or replacement of the product, and Elegant Hardware will not be liable for any economic loss, loss of profits, indirect, special or consequential damages (including in the case of negligence).

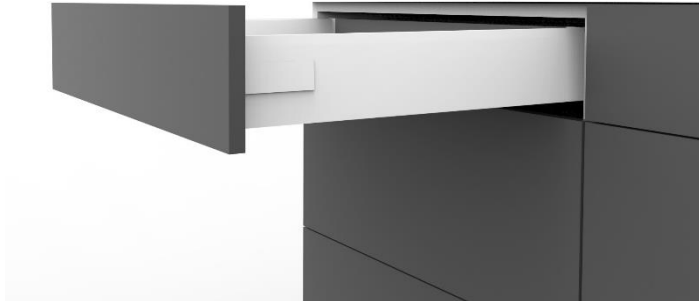
Table of Contents – Detailed

DRAWER SYSTEMS

CEMUX Series Drawer Systems >>.....

- Soft Close Double Metal Wall Drawer 84mm High.....4-5
- Soft Close Double Metal Wall Drawer 135mm High.....6-7
- Soft Close Double Metal Wall Drawer 167mm High.....8-9
- Soft Close Double Metal Wall Drawer 167mm High with Frosted GLASS Sides.....10-11
- Soft Close Double Metal Wall Drawer 199mm High.....12-13
- Soft Close Double Metal Wall Drawer 199mm High with Frosted GLASS Sides.....14-15
- Soft Close *Inner* Drawer 84mm High.....16-17
- Soft Close *Inner* Drawer 167mm High.....18-19
- Soft Close *Inner* Drawer 167mm High with Frosted GLASS Sides.....20-21
- Soft Close *Inner* Drawer 199mm High.....22-23
- Soft Close *Inner* Drawer 199mm High with Frosted GLASS Sides.....24-25

CEMUX Series Drawer Systems >> Soft Close Double Metal Wall 84mm High



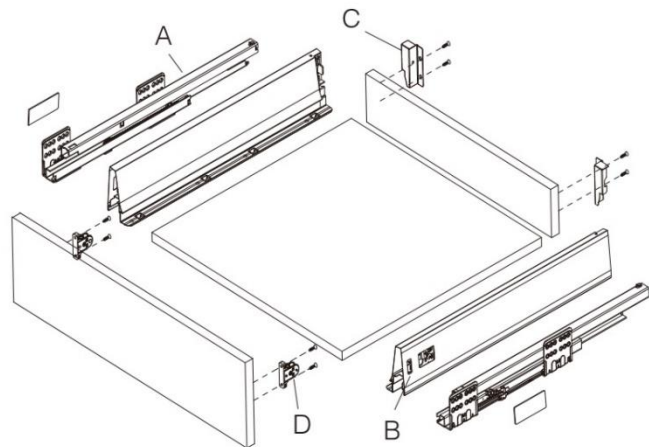
FEATURES

1. Perfect sliding qualities with precision full extension runners incorporating silent & gradual closing
2. Colour – White
3. Quick installation and easy dismantling
4. +/- 2mm up & down adjustment
5. +/- 1.5mm left & right adjustment
6. Integrated 3D front panel adjustment
7. **40Kg** dynamic loading capacity and 100,000 cycles tested.

CODE	DESCRIPTION	PKG
11.A3201.270	Soft Close Drawer System 270mm – White	1 Set
11. A3201.300	Soft Close Drawer System 300mm – White	1 Set
11. A3201.350	Soft Close Drawer System 350mm – White	1 Set
11. A3201.400	Soft Close Drawer System 400mm – White	1 Set
11. A3201.450	Soft Close Drawer System 450mm – White	1 Set
11. A3201.500	Soft Close Drawer System 500mm – White	1 Set
11. A3201.550	Soft Close Drawer System 550mm – White	1 Set

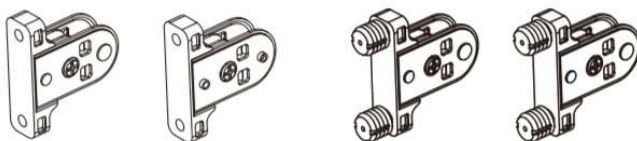
NO.	PKG CONTENTS
A	Left / Right drawer runners
B	Left / Right drawer sides
C	Left / Right rear connecting brackets
D	Left / Right front fixing brackets (see picture below)
-	Installation instructions

BASIC COMPONENTS OF 11.084

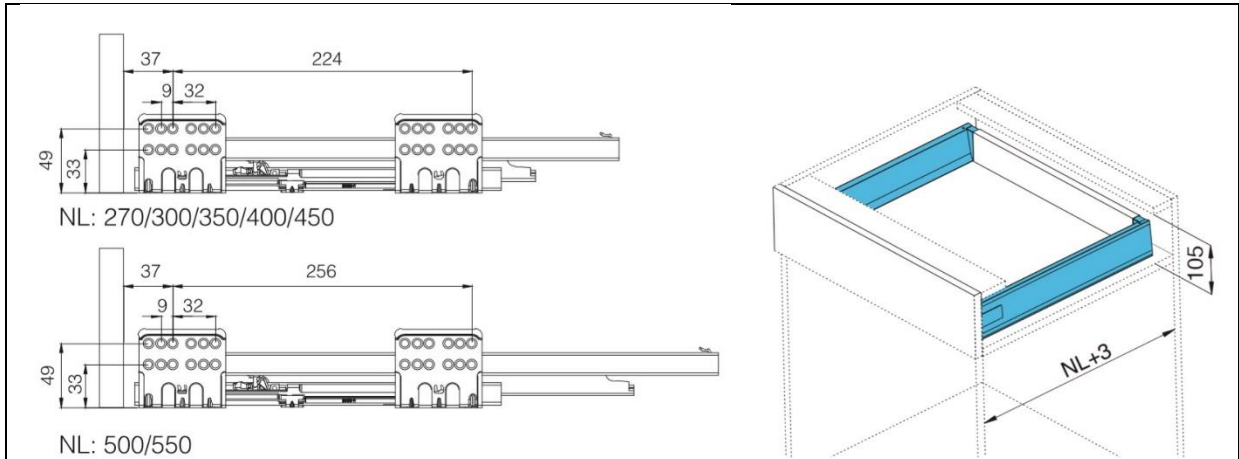


DETAILED VIEW ITEM D

Front fixing bracket screw on or with 10x9.8mm Dowels L/R



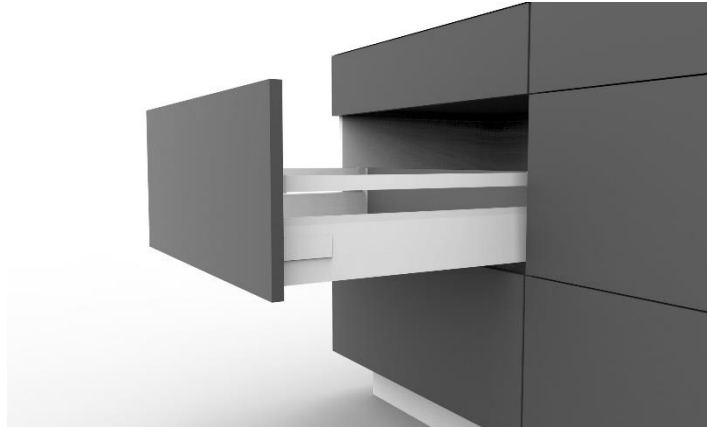
11.084 CEMUX Drawer System Installation Dimensions



ASSEMBLY DIMENSIONS OF CABINET	FRONT FIXING BRACKETS	CODE	NOMINAL LENGTH (NL)	DRAWER INTERNAL LENGTH	MIN. INSTALLATION LENGTH OF DRAWER
		11.084.270	270	246	273
		11.084.300	300	276	303
		11.084.350	350	326	353
		11.084.400	400	376	403
		11.084.450	450	426	453
		11.084.500	500	476	503
		11.084.550	550	526	553
DRILLING HOLE SIZE FRONT OF DRAWER	DRILLING HOLE SIZE BACK OF DRAWER	Cutting dimensions for 16mm MDF			
		LW Internal cabinet width		L Length	
		NL Nominal length		KB Cabinet width	

CEMUX Series Drawer Systems >>

Soft Close Double Metal Wall 135mm High

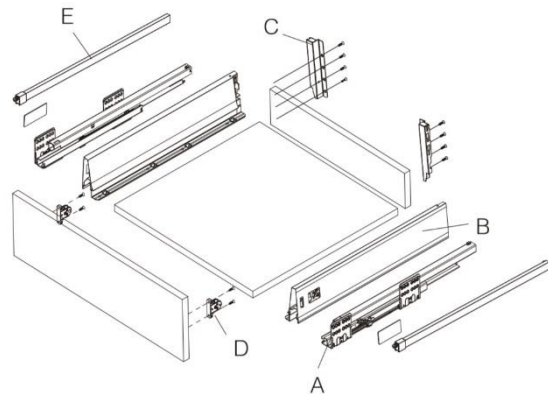


FEATURES

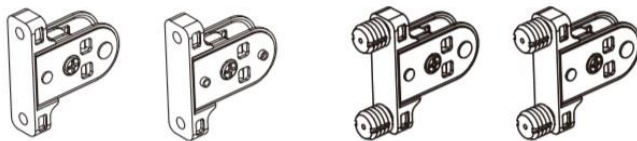
1. Perfect sliding qualities with precision full extension runners incorporating silent & gradual closing
2. Colour – White
3. Quick installation and easy dismantling
4. +/- 2mm up & down adjustment
5. +/- 1.5mm left & right adjustment
6. Integrated 3D front panel adjustment
7. **40Kg** dynamic loading capacity and 100,000 cycles tested.

NO.	PKG CONTENTS
A	Left / Right drawer runners
B	Left / Right drawer sides
C	Left / Right rear brackets
D	Left / Right front fixing brackets
-	Installation Instructions

BASIC COMPONENTS OF 11.135



DETAILED VIEW ITEM D
Front fixing bracket screw on or with 10x9.8mm Dowels L/R



ORDER BACK BRACKET AND SQUARE GALLERY RAIL SEPARATELY

CODE	DESCRIPTION	NO.
11.AR3202119W	Back Bracket WHITE L/R 135mm - PAIR	C

NOTE – Order item E Left/Right below:

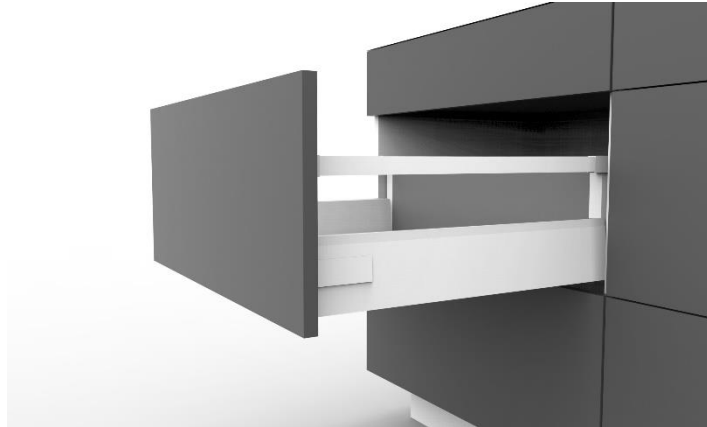
CODE	
11.AF320270W	Square Gallery Rail 270mm WHITE
11.AF320300W	Square Gallery Rail 300mm WHITE
11.AF320350W	Square Gallery Rail 350mm WHITE
11.AF320400W	Square Gallery Rail 400mm WHITE
11.AF320450W	Square Gallery Rail 450mm WHITE
11.AF320500W	Square Gallery Rail 500mm WHITE
11.AF320550W	Square Gallery Rail 550mm WHITE

11.135 CEMUX Drawer System 135mm Installation Dimensions

<p>NL: 270/300/350/400/450</p> <p>NL: 500/550</p>		
ASSEMBLY DIMENSIONS OF CABINET	FRONT FIXING BRACKETS	
		<p>Cutting dimensions for 16mm MDF</p> <p>KB Cabinet width LW Internal cabinet width NL Nominal length</p>
DRILLING HOLE SIZE FRONT OF DRAWER	DRILLING HOLE SIZE BACK OF DRAWER	
		<p>Basic components</p>

CEMUX Series Drawer Systems >>

Soft Close Double Metal Wall 167mm High

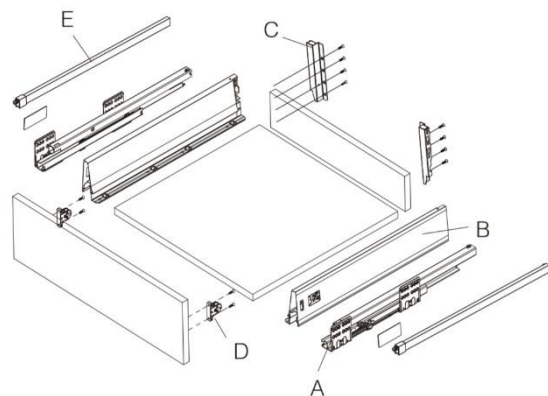


FEATURES

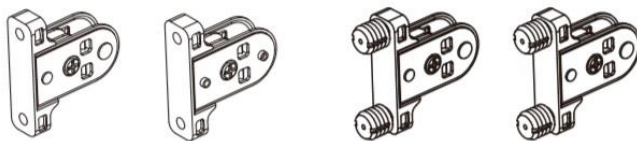
1. Perfect sliding qualities with precision full extension runners incorporating silent & gradual closing
2. Colour – White
3. Quick installation and easy dismantling
4. +/- 2mm up & down adjustment
5. +/- 1.5mm left & right adjustment
6. Integrated 3D front panel adjustment
7. **40Kg** dynamic loading capacity and 100,000 cycles tested.

NO.	PKG CONTENTS
A	Left / Right drawer runners
B	Left / Right drawer sides
C	Left / Right rear brackets
D	Left / Right front fixing brackets
-	Installation Instructions

BASIC COMPONENTS OF 11.167



DETAILED VIEW ITEM D
Front fixing bracket screw on or with 10x9.8mm Dowels L/R



ORDER BACK BRACKET AND SQUARE GALLERY RAIL SEPARATELY

CODE	DESCRIPTION	NO.
11.AR3203151W	Back Bracket WHITE L/R 167mm - PAIR	C

NOTE – Order item E Left/Right below:

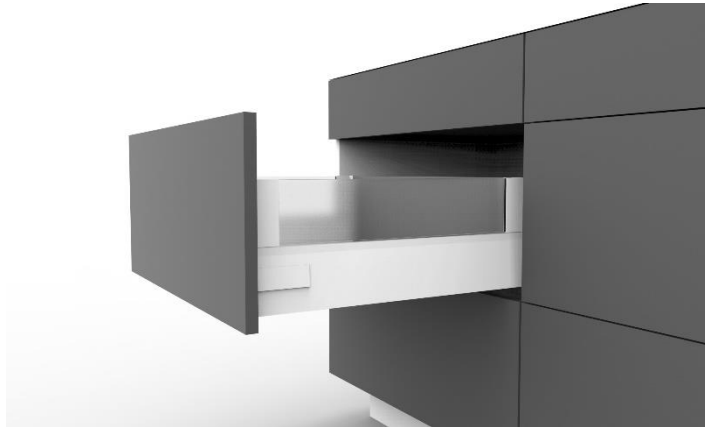
CODE	
11.AF320270W	Square Gallery Rail 270mm WHITE
11.AF320300W	Square Gallery Rail 300mm WHITE
11.AF320350W	Square Gallery Rail 350mm WHITE
11.AF320400W	Square Gallery Rail 400mm WHITE
11.AF320450W	Square Gallery Rail 450mm WHITE
11.AF320500W	Square Gallery Rail 500mm WHITE
11.AF320550W	Square Gallery Rail 550mm WHITE

11.167 CEMUX Drawer System 167mm Installation Dimensions

<p>NL: 270/300/350/400/450</p> <p>NL: 500/550</p>		<p>185</p> <p>NL+3</p>
<p>ASSEMBLY DIMENSIONS OF CABINET</p>	<p>FRONT FIXING BRACKETS</p>	<p>Cutting dimensions for 16mm MDF</p> <p>Back panel 151</p> <p>LW-87</p> <p>Bottom panel NL-10MM</p> <p>LW-75</p>
<p>Min 185</p> <p>181</p> <p>Min 33</p> <p>Min 49</p>	<p>96</p> <p>Min 47.5</p> <p>32</p> <p>15.5</p>	<p>DRILLING HOLE SIZE FRONT OF DRAWER</p>
<p>96</p> <p>32</p> <p>Min 47.5</p>	<p>9</p> <p>39</p> <p>32</p> <p>32</p> <p>32</p>	<p>DRILLING HOLE SIZE BACK OF DRAWER</p>
<p>10</p> <p>96</p> <p>32</p> <p>Min 47.5</p>		<p>Basic components</p>

CEMUX Series Drawer Systems >>

Soft Close Double Metal Wall 167mm with FROSTED Glass sides

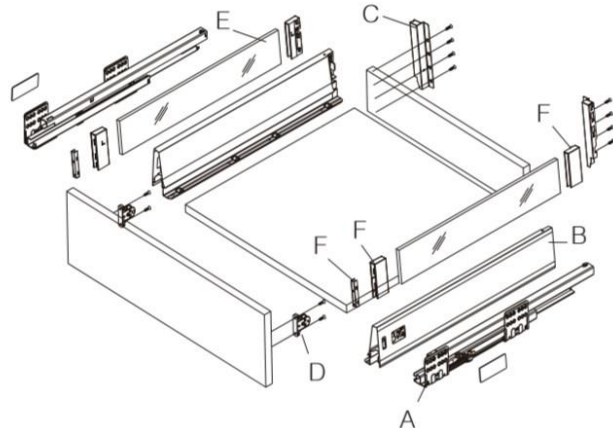


FEATURES

1. Perfect sliding qualities with precision full extension runners incorporating silent & gradual closing
2. Colour – White
3. Quick installation and easy dismantling
4. +/- 2mm up & down adjustment
5. +/- 1.5mm left & right adjustment
6. Integrated 3D front panel adjustment
7. **40Kg** dynamic loading capacity and 100,000 cycles tested.

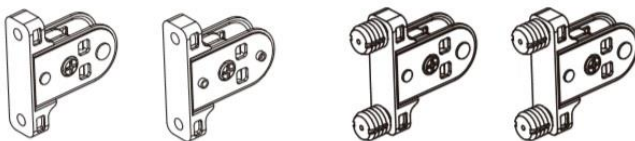
NO.	PKG CONTENTS
A	Left / Right drawer runners
B	Left / Right drawer sides
C	Left / Right rear brackets
D	Left / Right front fixing brackets
-	Installation Instructions

BASIC COMPONENTS OF 11.167 GLASS



DETAILED VIEW ITEM D

Front fixing bracket screw on or with 10x9.8mm Dowels L/R



ORDER BRACKETS & GLASS FITTINGS SEPARATELY

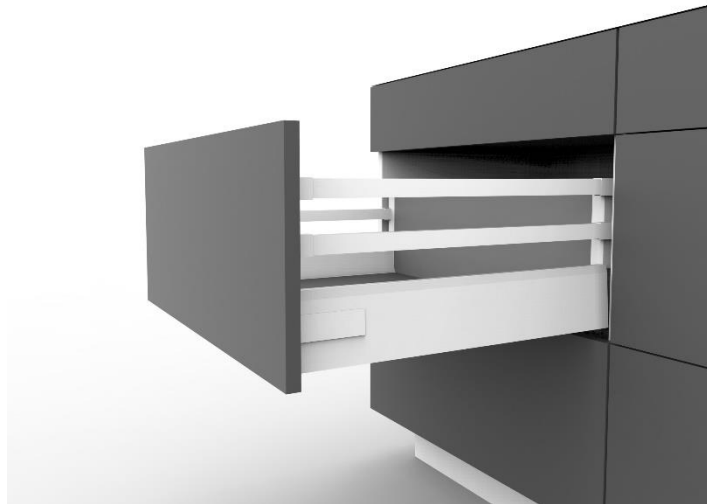
CODE	DESCRIPTION	NO.
11.AF3203151W	Back Bracket L/R 167mm – PAIR	D
11.AB1518400F	8mm Frosted Glass L/R 167mm – 400mm	E
11.AB1518450F	8mm Frosted Glass L/R 167mm – 450mm	E
11.AB1518500F	8mm Frosted Glass L/R 167mm – 500mm	E
11.AB1518W	Glass Holder / fastener L/R 167mm - PAIR	F

11.167 CEMUX Drawer System 167mm Installation Dimensions with GLASS sides

<p> NL: 270/300/350/400/450 NL: 500/550 Front cabinet: NL+3, 37 Drawer </p>		
ASSEMBLY DIMENSIONS OF CABINET	FRONT FIXING BRACKETS	3D DRAWING
DRILLING HOLE SIZE FRONT OF DRAWER	DRILLING HOLE SIZE BACK OF DRAWER	Cutting dimensions for 16mm MDF

CEMUX Series Drawer Systems >>

Soft Close Double Metal Wall 199mm High

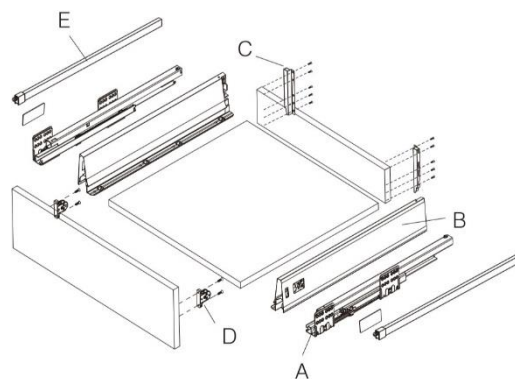


FEATURES

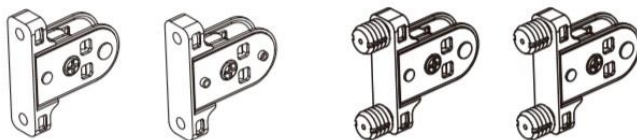
1. Perfect sliding qualities with precision full extension runners incorporating silent & gradual closing
2. Colour – White
3. Quick installation and easy dismantling
4. +/- 2mm up & down adjustment
5. +/- 1.5mm left & right adjustment
6. Integrated 3D front panel adjustment
7. **40Kg** dynamic loading capacity and 100,000 cycles tested.

NO.	PKG CONTENTS
A	Left / Right drawer runners
B	Left / Right drawer sides
C	Left / Right rear brackets
D	Left / Right front fixing brackets
-	Installation Instructions

BASIC COMPONENTS OF 11.199



DETAILED VIEW ITEM D
Front fixing bracket screw on or with 10x9.8mm Dowels L/R



ORDER BACK BRACKET AND SQUARE GALLERY RAIL SEPARATELY

CODE	DESCRIPTION	NO.
11.AR3204183W	Back Bracket WHITE L/R 199mm - PAIR	C

NOTE – Order item E Left/Right below: (Only Top Rail supplied, order Mid Rail Separately if required)

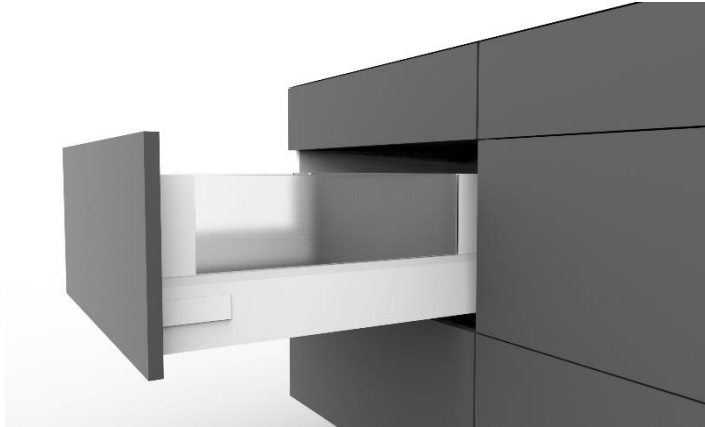
CODE	
11.AF320270W	Square Gallery Rail 270mm - WHITE
11.AF320300W	Square Gallery Rail 300mm - WHITE
11.AF320350W	Square Gallery Rail 350mm - WHITE
11.AF320400W	Square Gallery Rail 400mm - WHITE
11.AF320450W	Square Gallery Rail 450mm - WHITE
11.AF320500W	Square Gallery Rail 500mm - WHITE
11.AF320550W	Square Gallery Rail 550mm - WHITE

11.199 CEMUX Drawer System 199mm Installation Dimensions

<p>NL: 270/300/350/400/450</p> <p>NL: 500/550</p> <p>Front cabinet 37 NL+3</p> <p>Drawer</p>		
<p>ASSEMBLY DIMENSIONS OF CABINET</p>	<p>FRONT FIXING BRACKETS</p>	<p>Cutting dimensions for 16mm MDF</p> <p>Back panel 183 LW-87</p> <p>Bottom panel NL-10MM LW-75</p>
<p>Min 224 213 Min 33 Min 49</p>	<p>128 32 Min 47.5 15.5</p>	<p>3D DRAWING</p> <p>224 NL+3</p>
<p>DRILLING HOLE SIZE FRONT OF DRAWER</p> <p>128 Min 47.5 32 10</p>	<p>DRILLING HOLE SIZE BACK OF DRAWER</p> <p>32 8 64 32 32</p>	

CEMUX Series Drawer Systems >>

Soft Close Double Metal Wall 199mm with FROSTED Glass sides

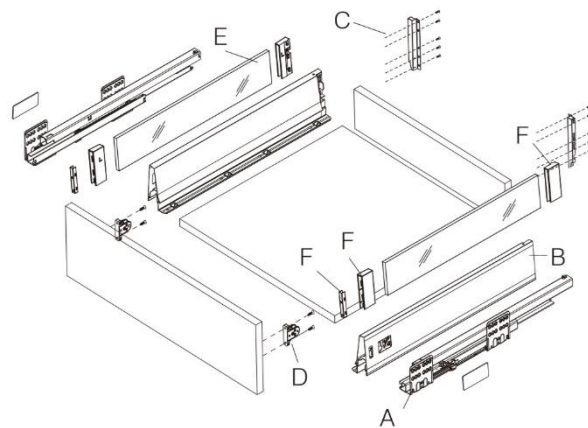


FEATURES

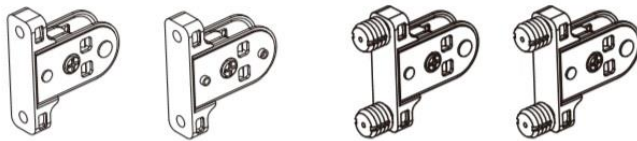
1. Perfect sliding qualities with precision full extension runners incorporating silent & gradual closing
2. Colour – White
3. Quick installation and easy dismantling
4. +/- 2mm up & down adjustment
5. +/- 1.5mm left & right adjustment
6. Integrated 3D front panel adjustment
7. **40Kg** dynamic loading capacity and 100,000 cycles tested.

NO.	PKG CONTENTS
A	Left / Right drawer runners
B	Left / Right drawer sides
C	Left / Right rear brackets
D	Left / Right front fixing brackets
-	Installation Instructions

BASIC COMPONENTS OF 11.199 GLASS



DETAILED VIEW ITEM D
Front fixing bracket screw on or with 10x9.8mm Dowels L/R



ORDER BRACKETS & GLASS FITTINGS SEPARATELY

CODE	DESCRIPTION	NO.
11.AR3204183W	Back Bracket L/R 199mm – PAIR	D
11.AB1838400F	8mm Frosted Glass L/R 199mm – 400mm	E
11.AB1838450F	8mm Frosted Glass L/R 199mm – 450mm	E
11.AB1838500F	8mm Frosted Glass L/R 199mm – 500mm	E
11.AB1838W	Glass Holder / fastener L/R 199mm - PAIR	F

11.199 CEMUX Drawer System 199mm Installation Dimensions with GLASS sides

<p>NL: 270/300/350/400/450</p> <p>NL: 500/550</p>		<p>Front cabinet</p> <p>Drawer</p>
ASSEMBLY DIMENSIONS OF CABINET	FRONT FIXING BRACKETS	3D DRAWING
DRILLING HOLE SIZE FRONT OF DRAWER	DRILLING HOLE SIZE BACK OF DRAWER	CUTTING DIMENSIONS 199mm GLASS SIDES

CEMUX Series Drawer Systems >>

Soft Close Inner Shallow Double Metal Wall 84mm High



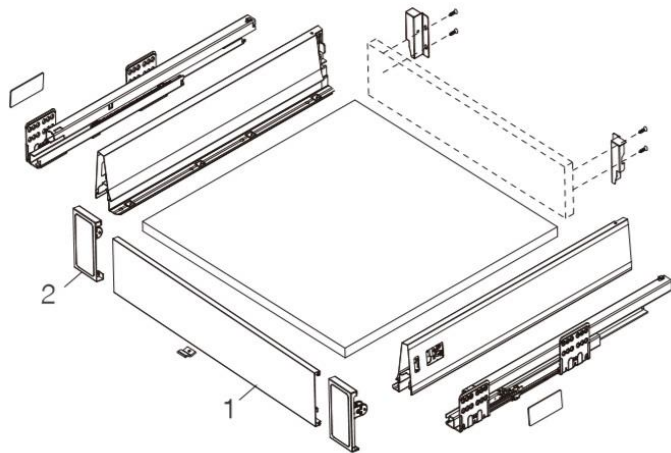
FEATURES

1. Perfect sliding qualities with precision full extension runners incorporating silent & gradual closing
2. Colour – White
3. Quick installation and easy dismantling
4. +/- 2mm up & down adjustment
5. +/- 1.5mm left & right adjustment
6. Integrated 3D front panel adjustment
7. **40Kg** dynamic loading capacity and 100,000 cycles tested.

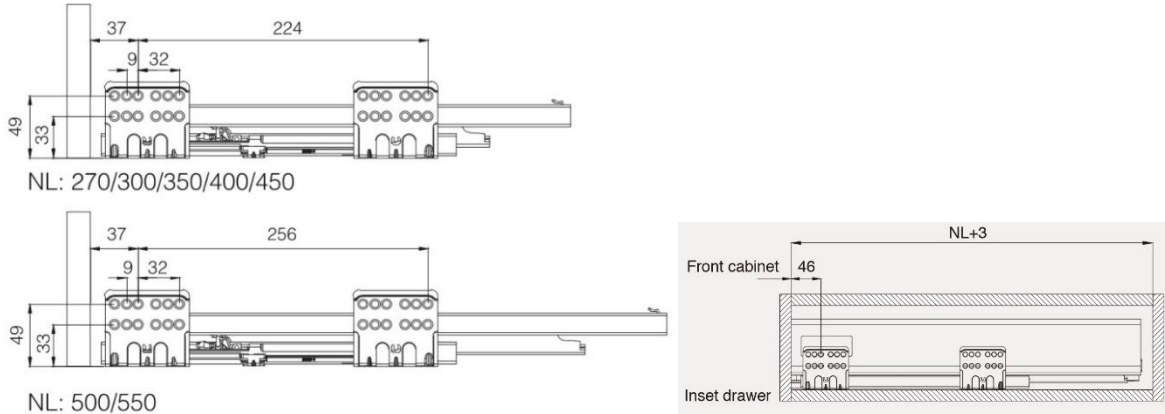
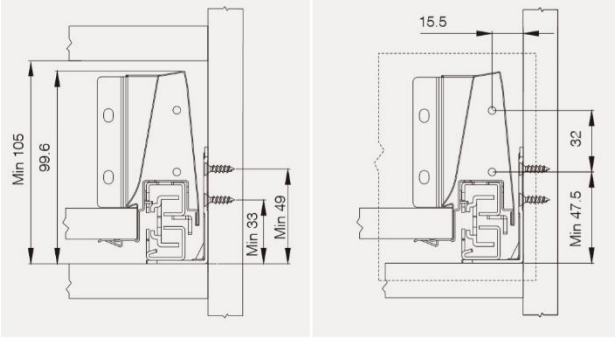
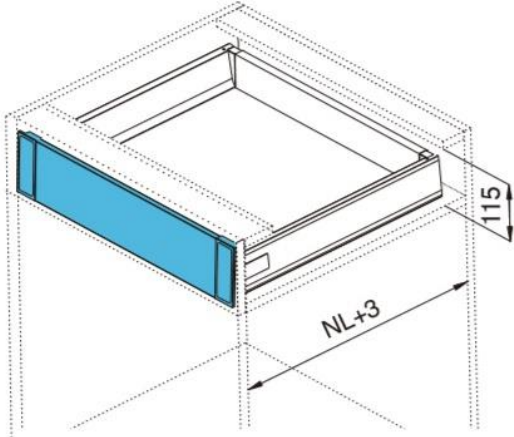
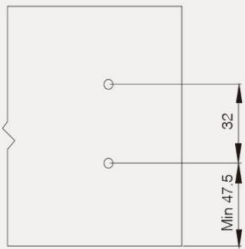
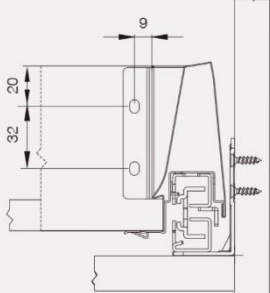
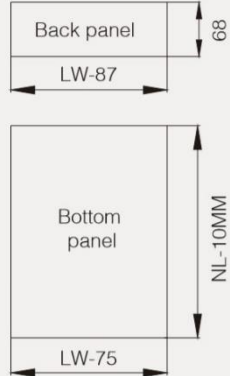
Order 84mm High drawer as per page 4 and below two items separately for Inner drawer

CODE	DESCRIPTION	PKG
11.AL321200W	Front Section 1200mm for Inner Drawer WHITE (ref item 1 below)	Each
11.AH320101W	Front Bracket for Inner Drawer to suit 84mm drawer (ref item 2 below)	1 Pair

INNER DRAWER 84mm



11.084 CEMUX Inner Drawer System 84mm Installation Dimensions

 <p>NL: 270/300/350/400/450</p> <p>NL: 500/550</p>		
<p>ASSEMBLY DIMENSIONS OF CABINET</p>	<p>FRONT FIXING BRACKETS</p>	<p>3D DRAWING</p>
		
<p>DRILLING HOLE SIZE FRONT OF DRAWER</p>	<p>DRILLING HOLE SIZE BACK OF DRAWER</p>	<p>Cutting dimensions for 16mm MDF</p>
		 <p>Back panel 68 LW-87</p> <p>Bottom panel NL-10MM LW-75</p>
<p>LW Internal cabinet width NL Nominal length</p>		<p>L Length KB Cabinet width</p>

CEMUX Series Drawer Systems >>

Soft Close Inner Shallow Double Metal Wall 167mm High

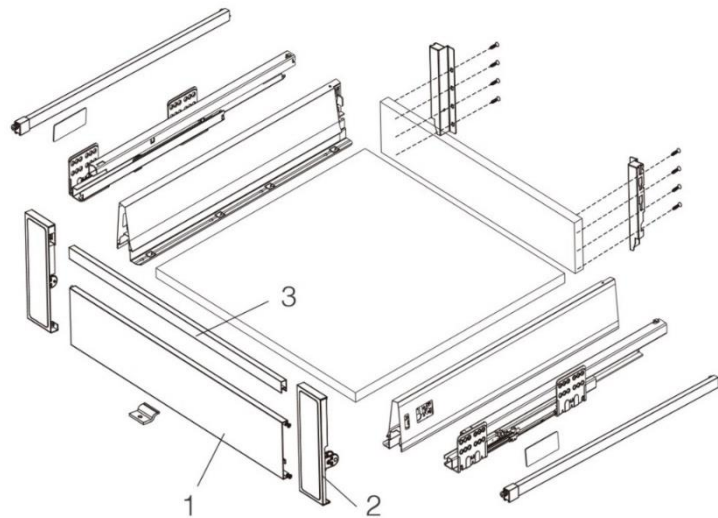


FEATURES

1. Perfect sliding qualities with precision full extension runners incorporating silent & gradual closing
2. Colour – White
3. Quick installation and easy dismantling
4. +/- 2mm up & down adjustment
5. +/- 1.5mm left & right adjustment
6. Integrated 3D front panel adjustment
7. **40Kg** dynamic loading capacity and 100,000 cycles tested.

Order 167mm High drawer as shown on page 8 and below items separately for Inner drawer

CODE	DESCRIPTION	PKG
11.AL321200W	Front Section 1200mm for Inner Drawer WHITE (ref item 1 below)	Each
11.AF320301W	Front Bracket for Inner Drawer to suit 167mm drawer (ref item 2 below)	1 Pair
11.HF321200W	Cross Square Rail 1200mm WHITE (ref item 3 below)	Each



Soft Close Inner Shallow Double Metal Wall 167mm High

ASSEMBLY DIMENSIONS OF CABINET	FRONT FIXING BRACKETS	3D DRAWING
DRILLING HOLE SIZE FRONT OF DRAWER	DRILLING HOLE SIZE BACK OF DRAWER	Cutting dimensions for 16mm MDF
		Cutting dimensions for front panel
		LW Internal cabinet width L Length NL Nominal length KB Cabinet width

CEMUX Series Drawer Systems >>

Soft Close Inner Shallow Double Metal Wall 167mm High with GLASS SIDES

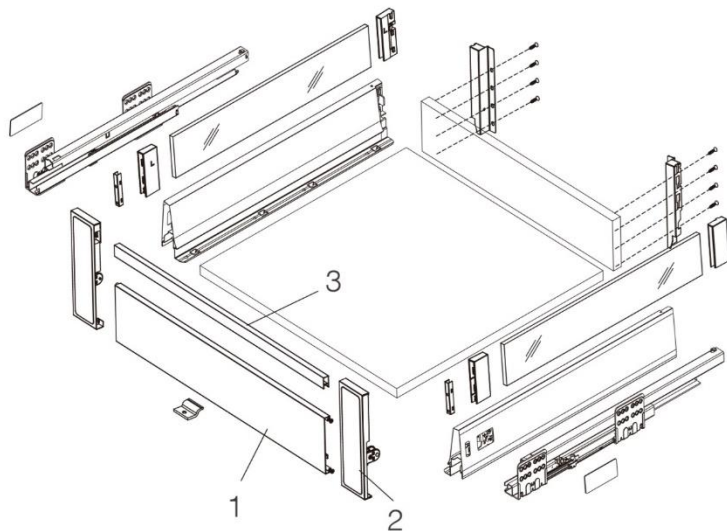


FEATURES

1. Perfect sliding qualities with precision full extension runners incorporating silent & gradual closing
2. Colour – White
3. Quick installation and easy dismantling
4. +/- 2mm up & down adjustment
5. +/- 1.5mm left & right adjustment
6. Integrated 3D front panel adjustment
7. **40Kg** dynamic loading capacity and 100,000 cycles tested.

Order 167mm High drawer as shown on page 8 and below items separately to suit Inner drawer with Glass

CODE	DESCRIPTION	PKG
11.AL321200W	Front Section 1200mm for Inner Drawer WHITE (<i>ref item 1 below</i>)	EACH
11.AF320301W	Front Bracket for Inner Drawer to suit 167mm drawer (<i>ref item 2 below</i>)	PAIR
11.HF321200W	Cross Square Rail 1200mm WHITE (<i>ref item 3 below</i>)	EACH
11.AR3203151W	Back Bracket L/R 167mm – PAIR	PAIR
11.AB1518400F	8mm Frosted Glass L/R 167mm – 400mm	PAIR
11.AB1518450F	8mm Frosted Glass L/R 167mm – 450mm	PAIR
11.AB1518500F	8mm Frosted Glass L/R 167mm – 500mm	PAIR
11.AB1518W	Glass Holder / fastener L/R 167mm - PAIR	PAIR



Soft Close Inner Shallow Double Metal Wall 167mm High with GLASS SIDES

<p>NL: 270/300/350/400/450</p> <p>NL: 500/550</p>		<p>Front cabinet</p> <p>Inset drawer</p>
<p>ASSEMBLY DIMENSIONS OF CABINET</p>		<p>FRONT FIXING BRACKETS</p>
<p>DRILLING HOLE SIZE FRONT OF DRAWER</p>	<p>DRILLING HOLE SIZE BACK OF DRAWER</p>	<p>Cutting dimensions for 16mm MDF</p> <p>Back panel 151 LW-87</p> <p>Bottom panel NL-10MM LW-75</p>
		<p>Cutting dimensions for front panel</p> <p>Front panel length = LW-90</p> <p>Front rail length = LW-92</p>
<p>LW Internal cabinet width NL Nominal length</p>		<p>L Length KB Cabinet width</p>

CEMUX Series Drawer Systems >>

Soft Close Inner Shallow Double Metal Wall 199mm High



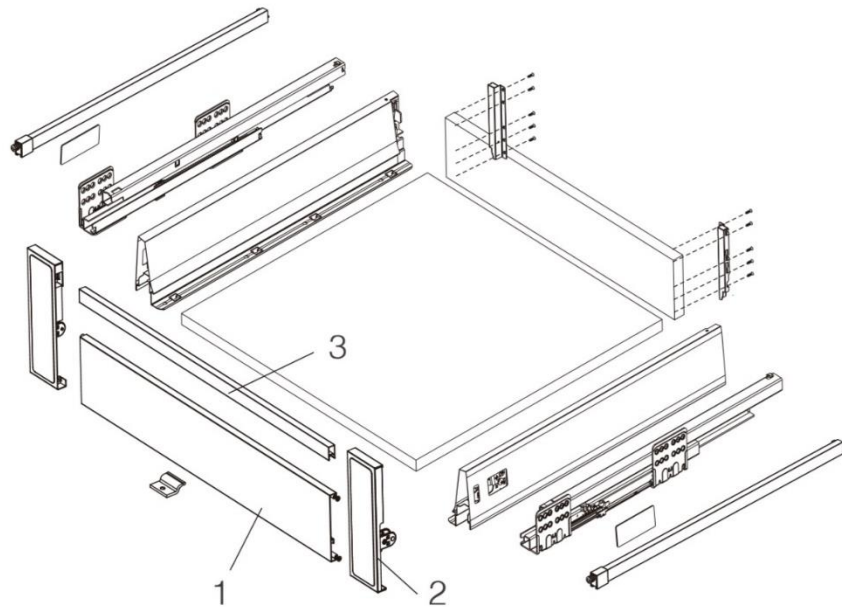
FEATURES

1. Perfect sliding qualities with precision full extension runners incorporating silent & gradual closing
2. Colour – White
3. Quick installation and easy dismantling
4. +/- 2mm up & down adjustment
5. +/- 1.5mm left & right adjustment
6. Integrated 3D front panel adjustment
7. **40Kg** dynamic loading capacity and 100,000 cycles tested.

Order 199mm High drawer as shown on page 12 and below items separately to suit Inner drawer

(Only Top Rail supplied, order Mid Rail Separately if required)

CODE	DESCRIPTION	PKG
11.AL321200W	Front Section 1200mm for Inner Drawer WHITE (<i>ref item 1 below</i>)	EACH
11.AF320401W	Front Bracket for Inner Drawer to suit 199mm drawer (<i>ref item 2 below</i>)	PAIR
11.HF321200W	Cross Square Rail 1200mm WHITE (<i>ref item 3 below</i>)	EACH



Soft Close Inner Shallow Double Metal Wall 199mm High

<p>NL: 270/300/350/400/450</p> <p>NL: 500/550</p>		<p>Front cabinet</p> <p>Inset drawer</p>
ASSEMBLY DIMENSIONS OF CABINET	FRONT FIXING BRACKETS	3D DRAWING
DRILLING HOLE SIZE FRONT OF DRAWER	DRILLING HOLE SIZE BACK OF DRAWER	Cutting dimensions for 16mm MDF
<p>Front panel length = LW-90</p> <p>Front rail length = LW-92</p>		<p>LW Internal cabinet width L Length</p> <p>NL Nominal length KB Cabinet width</p>

CEMUX Series Drawer Systems >>

Soft Close Inner Shallow Double Metal Wall 199mm High with GLASS SIDES

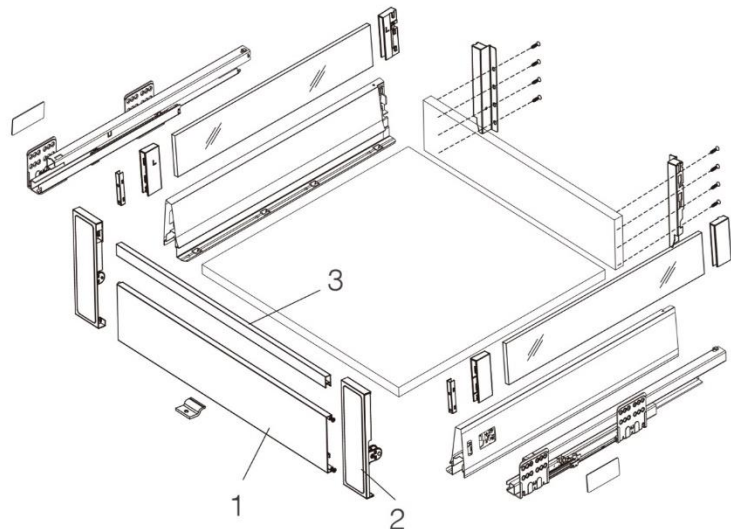


FEATURES

1. Perfect sliding qualities with precision full extension runners incorporating silent & gradual closing
2. Colour – White
3. Quick installation and easy dismantling
4. +/- 2mm up & down adjustment
5. +/- 1.5mm left & right adjustment
6. Integrated 3D front panel adjustment
7. **40Kg** dynamic loading capacity and 100,000 cycles tested.

Order 199mm High drawer as shown on page 12 and below items separately to suit inner drawer with GLASS

CODE	DESCRIPTION	PKG
11.AL321200W	Front Section 1200mm for Inner Drawer WHITE (<i>ref item 1 below</i>)	EACH
11.AF320401W	Front Bracket for Inner Drawer to suit 199mm drawer (<i>ref item 2 below</i>)	PAIR
11.HF321200W	Cross Square Rail 1200mm WHITE (<i>ref item 3 below</i>)	EACH
11.AR3204183W	Back Bracket L/R 199mm – PAIR	PAIR
11.AB1838400F	8mm Frosted Glass L/R 199mm – 400mm	PAIR
11.AB1838450F	8mm Frosted Glass L/R 199mm – 450mm	PAIR
11.AB1838500F	8mm Frosted Glass L/R 199mm – 500mm	PAIR
11.AB1838W	Glass Holder / fastener L/R 199mm - PAIR	PAIR



Soft Close Inner Shallow Double Metal Wall 199mm High with GLASS SIDES

<p>NL: 270/300/350/400/450</p> <p>NL: 500/550</p>		<p>3</p>
<p>ASSEMBLY DIMENSIONS OF CABINET</p>	<p>FRONT FIXING BRACKETS</p>	<p>3D DRAWING</p>
<p>DRILLING HOLE SIZE FRONT OF DRAWER</p>	<p>DRILLING HOLE SIZE BACK OF DRAWER</p>	<p>Cutting dimensions for 16mm MDF</p> <p>Cutting dimensions for front panel</p>
		<p>LW Internal cabinet width L Length</p> <p>NL Nominal length KB Cabinet width</p>